



**Kent Way, Surbiton, KT6**  
**£2,200 per month**

**Hawes & Co**

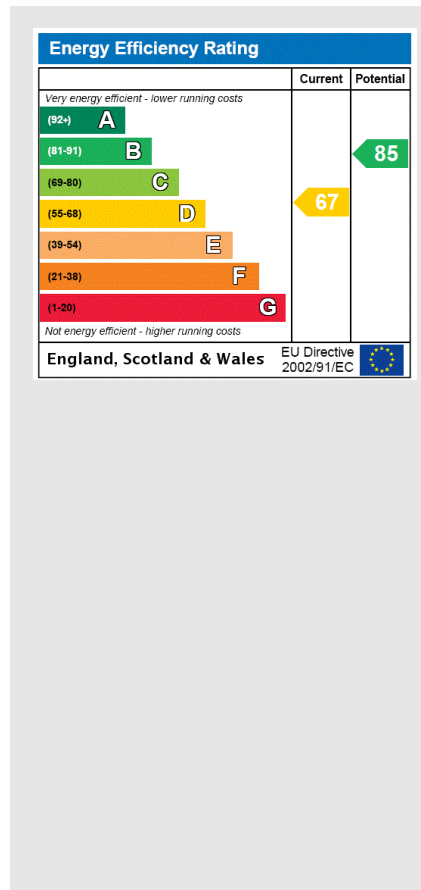
## Kent Way, Surbiton, KT6

A beautifully newly renovated three-bedroom terraced house situated in Surbiton and within easy access to the A3.

As you enter the property you are welcomed with a spacious hallway, freshly painted walls throughout the property making it bright and airy. Newly fitted sleek black modern kitchen installed with integrated Bosch appliances. Spacious living room with double doors onto rear garden, large outside brick shed for storage. Side access.

Upstairs consists of main bedroom with ample built in storage, second double bedroom and a smaller third bedroom which can be utilised as a study or nursery. All with newly laid cream carpets.

- Three Bedrooms
- Newly Fitted Modern Kitchen
- Newly Fitted Modern Bathroom
- Refurbished Throughout
- Private Garden

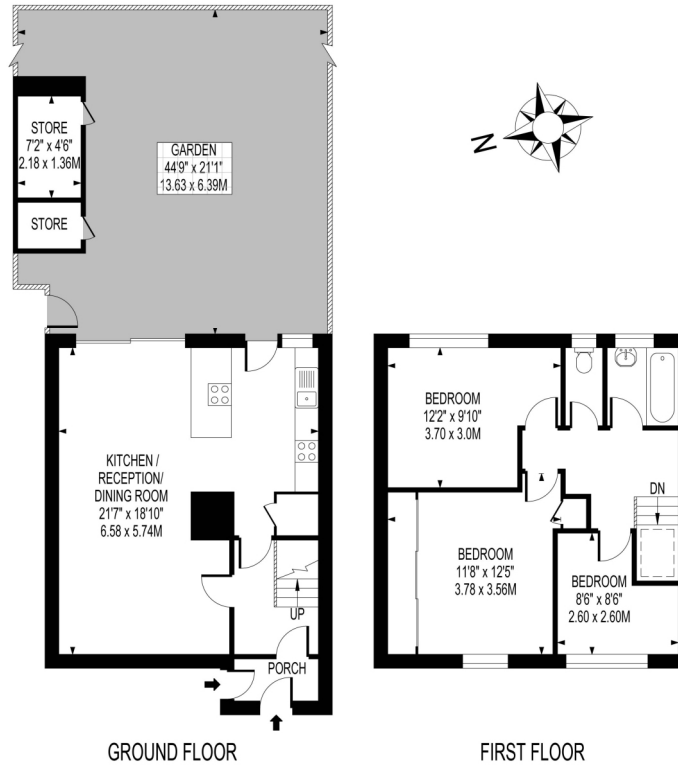


£2,200 per month

## KENT WAY

APPROXIMATE GROSS INTERNAL FLOOR AREA : 858 SQ FT- 79.70 SQ M  
(EXCLUDES STORES)

STORES AREA : 47 SQ FT- 4.39 SQ M



FOR ILLUSTRATION PURPOSES ONLY

THIS FLOOR PLAN SHOULD BE USED AS A GENERAL OUTLINE FOR GUIDANCE ONLY AND DOES NOT CONSTITUTE IN WHOLE OR IN PART AN OFFER OR CONTRACT.  
ANY INTENDING PURCHASER OR LESSEE SHOULD SATISFY THEMSELVES BY INSPECTION, SEARCHES, ENQUIRIES AND FULL SURVEY AS TO THE CORRECTNESS OF EACH STATEMENT.  
ANY AREAS, MEASUREMENTS OR DISTANCES QUOTED ARE APPROXIMATE AND SHOULD NOT BE USED TO VALUE A PROPERTY OR BE THE BASIS OF ANY SALE OR LET.

